



Edgewood College Cultural Resource Policies, Procedures, and Practices

1000 Edgewood College Drive, Madison, WI 53711

2019

Land Recognition Statement:

"We recognize this sacred land on which our College exists. Our Dominican heritage, educational mission, and core values call us to be stewards of this land and the Native mounds located throughout our campus. We respectfully acknowledge our local First Nation, the Ho-Chunk, and the additional 11 Indigenous Nations of Wisconsin that have shaped our state's history and our local community."

1. Purpose

This document details the policies, procedures, and practices for caring for and maintaining each of the catalogued Indian effigy, conical, and linear mounds on the Edgewood College campus grounds, while valuing the cultural and historical significance of these mounds. All mound care and oversight will be performed in accordance with the Wisconsin's Burial Sites Preservation Law (Wis. Stat. § 157.70) and guidance from the Wisconsin Department of Natural Resources' Burial, Earthworks, and Mounds Preservation Policy and Plan (DNR Plan).

2. Resources

Wisconsin Historical Society Division of Historic Preservation-Public History Compliance Archaeologist, Leslie Eisenberg, Ph.D. and Ho-Chunk Nation Tribal Historic Preservation Officer, Bill Quackenbush. These shall be the primary consultants to Edgewood College regarding the Edgewood College Cultural Resources Policies, Procedures, and Practices.

3. Responsibility for Application of Cultural Resource Policies, Procedures, and Practices

The Landscape and Grounds Department will perform or oversee any and all mound care and coordinate with Resources identified in this document as well as other College resources, e.g. Executive Director of Diversity and Inclusion.

4. Policies

The following policies are applicable to every mound on the College grounds. Individual mound care is detailed under section 7, Care Procedures and Practices. All mounds are numbered under section 5 and mapped under section 6.

- A. The Edgewood College Mound Group is designated landmark Site #104. The City of Madison Landmarks Commission must approve all building projects or other land disturbances occurring within fifty feet of the mounds' boundaries as indicated in the Landmarks and Landmark Sites Nomination Form for Site 104 prior to obtaining building permits.
- B. Any alteration or care outside of the procedures and practices outlined in this document, including construction and excavation that may cause or permit the disturbance of cataloged sites, shall be done in consultation with the Ho-Chunk Nation Tribal Historic Preservation Officer and approved by the Wisconsin State Historical Society and Landmarks Commission.
- C. All current work on or near the mounds will be in compliance with Wis. Stat. § 157.70.
 - i. Wis. Stat. § 157.70 includes an inadvertent discovery protocol
- D. The DNR Plan will provide guidance, not authorization, on the care of the mounds.
- E. Invasive plant removal will take place seasonally or as needed on each of the mounds.
 - i. Woody invasive plants will be cut at ground level. Stumps will be treated with an herbicide to prevent resprouting. Herbicides may include, but are not limited to, glyphosate, triclopyr, picloram, or 2,4-D.
 - ii. Stumps may not be removed.
 - iii. Herbaceous invasive plants will be sprayed with an herbicide or mowed. Herbicides may include, but are not limited to, glyphosate, 2,4-D, or dicamba.

- iv. Plants may not be pulled, dug or otherwise removed by the roots.

5. Mound Assigned Numbers, Location Descriptions, and Names (# in blue text on map)

Mound 1 – SE corner of College lot – “Panther Mound”

Mounds 2-4 – NW of Siena Apartments, E of Campus School – “Siena Heights Series”

(Cared for as one collective mound)

Mound 5 – SE of East Regina, SW of Campus School – “East Regina Mound”

Mound 6 – N of Mazzuchelli Hall, S of Regina Hall – “Mazz Conical Mound”

Mounds 7-9 – SE of Stevie Hall, NW of Mazzuchelli Hall – “Park and Pleasure Drive Eastern Series”

(Located on property easement to the City of Madison)

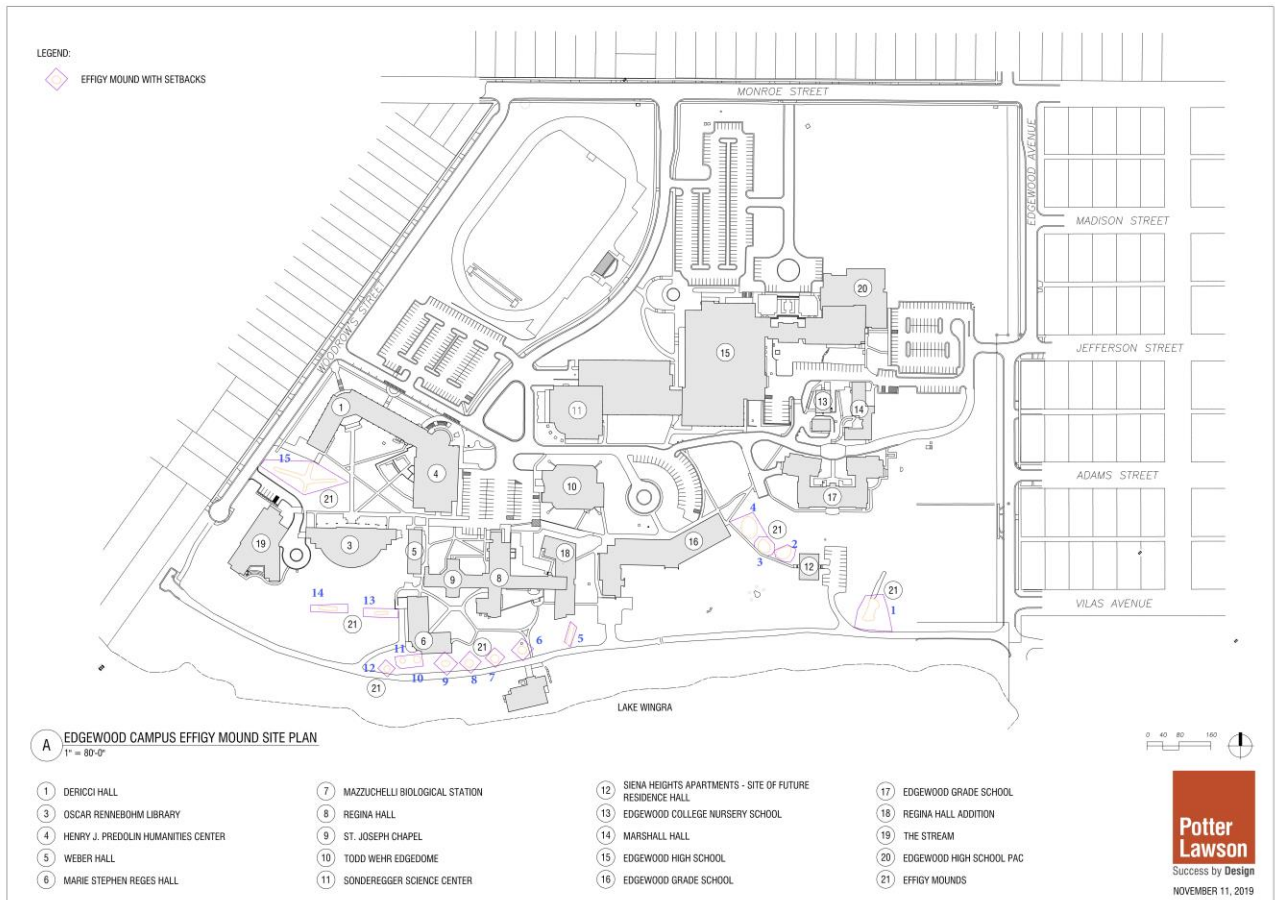
Mounds 10-12 – SW of Stevie Hall – “Park and Pleasure Drive Western Series”

(Partially located on property easement to the City of Madison)

Mounds 13-14 – S of Library, W of Stevie Hall – “Library Mounds”

Mound 15 – SW of DeRicci Hall, NW of Library – “Bird Mound”

6. Campus Map



7. Care Procedures and Practices

Care Responsibilities	Mound Assigned Numbers			
	1, 5, 6, 10-12, 13-14	7-9	2-4	15
Mound is located in a natural, forest setting.	✓	✓		
Work will be completed with authorization from the City of Madison, due to location within City of Madison Easement area.		✓		
Work will be monitored by City of Madison and Edgewood College.		✓		
Trees (excluding invasive plants) will not be removed.	✓			
Native vegetation will not be removed.	✓			
If a tree is storm damaged and falls, immediate action will be taken to ensure the site does not pose a hazard. If deemed necessary, entire damaged tree removal will take place only when the ground is frozen. The stump of the tree will be cut flush to the ground, ensuring no soil is disturbed.	✓			
Stump grinding will not occur. Stumps may be treated with herbicide such as glyphosate or triclopyr to prevent resprouting.	✓			
Leaf and forest debris will not be removed.	✓			
Garbage and litter waste will be removed.	✓	✓	✓	✓
Mound is located in maintained landscaped area. Presently covered with turf grass.			✓	✓
Trees, shrubs, or plants will not be installed in or around these mounds.	✓	✓	✓	✓
If grass dies back, over-seeding of grass may occur in order to prevent erosion.			✓	✓
Soil will not be added or removed.	✓	✓	✓	✓
Straw mats or staples will not be used to cover grass.			✓	✓
Grass will be mowed biweekly or as needed with a push mower at a blade setting sufficient to ensure damage does not occur.			✓	✓
Fallen branches will be removed prior to mowing.			✓	✓
Leaves will be removed monthly or as needed.			✓	✓
Fenced to deter pedestrian traffic. Fence may be repaired in order to protect mound. Enhancements to the fence that may disturb the soil need further consultation.				✓

8. Use of Cultural Resources

Cultural Resources are open and accessible to the public for educational purposes or for traditional use by indigenous people. Any use of cultural resources cannot have soil disturbance activities. Prior approval is needed for use of the mounds, and the approval is at the College's discretion. To organize any activities that involve Cultural Resources at Edgewood College, please contact the Director of Facilities.